



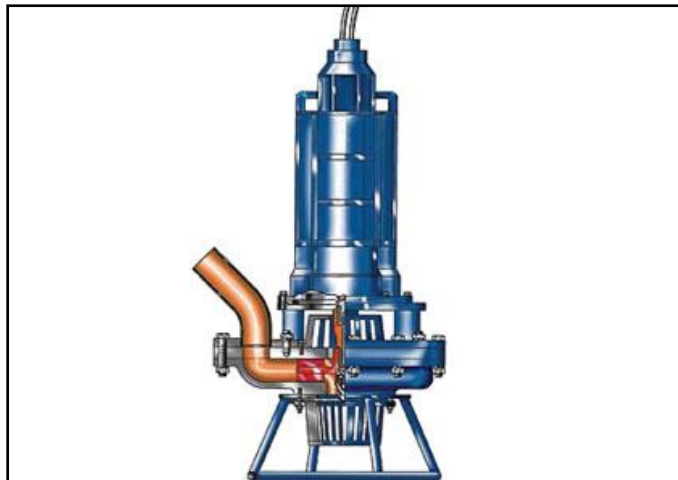
CRIMAR INDUSTRIAL

6720 E. Camino Principal, Suite 100 Tucson, AZ 85715 1 (520)574-8350

E-mail: rbeman@crimar.org

www.crimar.org

Series WQ Submersible Sewage Pump



Explanation of Type:

300WQ850-15-55

300: Diameter of Discharge

WQ: Submersible Sewage Pump

850: Flow Capacity (m³/h)

15: Head (m)

55: Matched Motor Power

Features:

1. Series WQ Pump is the single stage, single suction, vertical and centrifugal submersible sewage pump. The pump integrated with motor is submerged into water. It is suitable for delivering various sewage and effluent, building and construction sludge, coal water, rain water and etc. the specific gravity of transported mixture is not exceeded 1.1 and PH value in 5-10.

2. Motor insulation is Class F and protection class is IP 68. The submersible motor has the advantages of reliable exchange current, allowable connection, shut-off and adjustment current in short time. The motor is designed in jacket-type construction. The submersible motor is fitted with leakage, over-heat and moisture protection in order to ensure the operation without

FOR ADDITIONAL INFORMATION REGARDING THE ABOVE PUMPS PLEASE CONTACT
CRIMAR INDUSTRIAL (520) 574-8350 RBEMAN@CRIMAR.ORG

default.

3. Series WQ pump has two kinds of installation-guide way and bracket types. The pump is installed and operated easily. The construction coast will be decreased in 40% compared with the pump used on land.
4. Advanced hydraulic model, CAD technology, higher efficiency and obvious energy-saving.
5. Unique designed impeller, wide passage channel and anti-twisting and non-clogging.
6. Replaceable wear ring of casing between pump casing and impeller to ensure the pump operating at optimum efficiency.
7. Shaft sealing utilized double ends mechanical seal designed for sewage treatment and one skeleton oil seal has been used in the pump chamber. It has the features of reliable operation and longer service life.
8. Leakage protection is fitted in the oil chamber. When the first end of mechanical seal is in failure and oil & water enters into motor, it will warning by hummer.
9. Two types of cooling system can be selected. When the medium temperature in $\leq 40^{\circ}\text{C}$, it can be cooled by itself circulation. When the medium temperature in $> 40^{\circ}\text{C}$ or the medium is contained of big particles and longer fiber, it can be cooled by the cycling water from outside connection. If the outside cooling system can be adopted, it can be also operated on land.
10. Submersible motor is dry-type construction. Stator adopts class F insulation (temperature-resistance 155°C) and over-load & over-heat protection is built in it. When temperature exceeds 150°C ,

Technical Parameter Table

Type	Flow Capacity		Head m	Speed r/min	Efficiency %	Power kW	Discharge Diameter mm
	m ³ /h	l/s					
50WQ65-30-11	65	18.1	30	2900	71	11	50
50WQ55-22-7.5	55	15.3	22	2900	68	7.5	50
50WQ-70-52-18.5	70	19.4	52	2900	65	18.5	50
50WQ40-12-3	40	11.1	12	1450	65	3	50
65WQ60-15-5.5	60	16.7	15	960	63	5.5	65
65WQ55-11-4	55	15.3	11	960	63	4	65
65WQ50-8-3	50	13.9	8	960	64	3	65
65WQ120-50-37	120	33.3	50	1450	62	37	65
65WQ100-32-18.5	100	27.8	32	1450	64	18.5	65
65WQ90-25-15	90	25	25	1450	66	15	65
65WQ80-19-11	80	22.2	19	1450	66	11	65

FOR ADDITIONAL INFORMATION REGARDING THE ABOVE PUMPS PLEASE CONTACT
CRIMAR INDUSTRIAL (520) 574-8350 RBEMAN@CRIMAR.ORG

80WQ80-13-5.5	80	22.2	13	960	68	5.5	80
80WQ70-10-4	70	19.4	10	960	68	4	80
80WQ150-52-45	150	41.7	52	1450	64	45	80
80WQ130-30-18.5	130	36.1	30	1450	70	18.5	80
80WQ110-24-15	110	30.6	24	1450	74	15	80
80WQ100-16-11	100	27.8	16	1450	66	11	80
100WQ80-8-4	80	22.2	8	960	72	4	100
100WQ120-12-7.5	120	33.3	12	960	70	7.5	100
100WQ100-9-4	100	27.8	9	960	70	4	100
100WQ150-16-15	150	41.7	16	960	70	15	100
100WQ220-46-55	220	61.1	46	1450	70	55	100
100WQ170-26-22	170	47.2	26	1450	72	22	100
100WQ150-20-15	150	41.7	20	1450	72	15	100
100WQ190-34-37	190	52.8	34	1450	70	37	100
150WQ200-10-11	200	55.6	10	960	74	11	150
150WQ150-8-7.5	150	41.7	8	960	72	7.5	150
150WQ250-16-18.5	250	69.4	16	960	77	18.5	150
150WQ190-13-11	190	52.8	13	960	78	11	150
150WQ400-50-90	400	111.1	50	1450	78	90	150
150WQ340-37-55	340	94.4	37	1450	76	55	150
150WQ300-26-37	300	83.3	26	1450	74	37	150
150WQ260-20-30	260	72.2	20	1450	73	30	150
200WQ360-9-15	360	100	15	960	76	15	200
200WQ280-7-11	280	77.8	7	960	70	11	200
200WQ360-13-22	360	100	13	960	77	22	200
200WQ600-45-110	600	166.7	45	1450	82	110	200
200WQ535-38-90	535	148.6	38	1450	80	90	200
200WQ485-31-75	485	134.7	31	1450	78	75	200
200WQ435-19-37	435	120.8	19	960	83	37	200
200WQ375-16-30	375	104.2	16	960	82	30	200
250WQ900-38-160	900	250	38	1450	75	160	250
250WQ1000-50-200	1000	277.8	50	1450	80	200	250
250WQ455-8-18.5	455	126.4	8	960	71	18.5	250
250WQ500-10-22	500	138.9	10	960	75	22	250
250WQ600-12-37	600	166.7	12	960	74	37	250
250WQ800-30-110	800	222.2	30	960	82	110	250

FOR ADDITIONAL INFORMATION REGARDING THE ABOVE PUMPS PLEASE CONTACT
CRIMAR INDUSTRIAL (520) 574-8350 RBEMAN@CRIMAR.ORG

250WQ650-20-75	650	180.6	20	960	74	72	250
250WQ500-17-45	500	138.9	17	725	77	45	250
300WQ800-8-30	800	222.2	8	960	74	30	300
300WQ900-10-37	900	250	10	960	75	37	300
300WQ1500-36-200	1500	416.7	36	1450	81	200	300
300WQ1400-30-160	1400	388.9	30	1450	78	160	300
300WQ1050-27-132	1050	291.7	27	960	83	132	300
300WQ1550-48-315	1550	430.6	48	1450	78	315	300
300WQ950-20-90	950	263.9	20	960	80	90	300
300WQ850-15-55	850	236.1	15	725	81	55	300
350WQ2000-30-220	2000	555.6	30	1450	81	220	350
350WQ1800-24-185	1800	1500	24	960	88	185	350
350WQ1700-17-132	1700	472.2	17	960	86	132	350
350WQ1500-13-90	1500	416	13	725	85	90	350
350WQ1300-11-75	1300	361.1	11	725	84	75	350
350WQ1100-8-37	1100	305.6	8	725	76	37	350
350WQ2500-38-380	2500	6944.4	38	1450	83	380	350
400WQ1500-8-55	1500	416.7	8	725	78	55	400
400WQ2700-20-215	2700	750	20	960	86	215	400
400WQ2400-16-160	2400	666.7	16	960	83	160	400
400WQ2000-12-110	2000	555.6	12	725	86	110	400
400WQ1700-10-75	1700	472.2	10	725	82	75	400
500WQ3900-27-430	3900	108.3	27	960	83	430	500
500WQ3550-24-380	3550	986.1	24	960	81	380	500
500WQ3000-18-220	3000	833.3	18	725	84	220	500
500WQ2700-16-185	2700	750	16	725	82	185	500
500WQ2600-14-160	2600	722.2	14	725	80	160	500
600WQ4800-23-400	4800	1333	23	730	87	400	600
600WQ5660-25-500	5660	1572	25	730	87	500	600
600WQ4360-19-315	4360	1211	19	730	84	315	600
600WQ3900-15-220	3900	1083	15	580	86	220	600
600WQ4500-16-280	4500	1250	16	580	87	280	600
600WQ3800-12-200	3800	1050	12	490	86	200	600

Copyright©2008-2009 Shijiazhuang Kingda Pump Industry Group Co., Ltd

FOR ADDITIONAL INFORMATION REGARDING THE ABOVE PUMPS PLEASE CONTACT
CRIMAR INDUSTRIAL (520) 574-8350 RBEMAN@CRIMAR.ORG